

Intel DE3815TYKHE NUC 4 GB eMMC guide

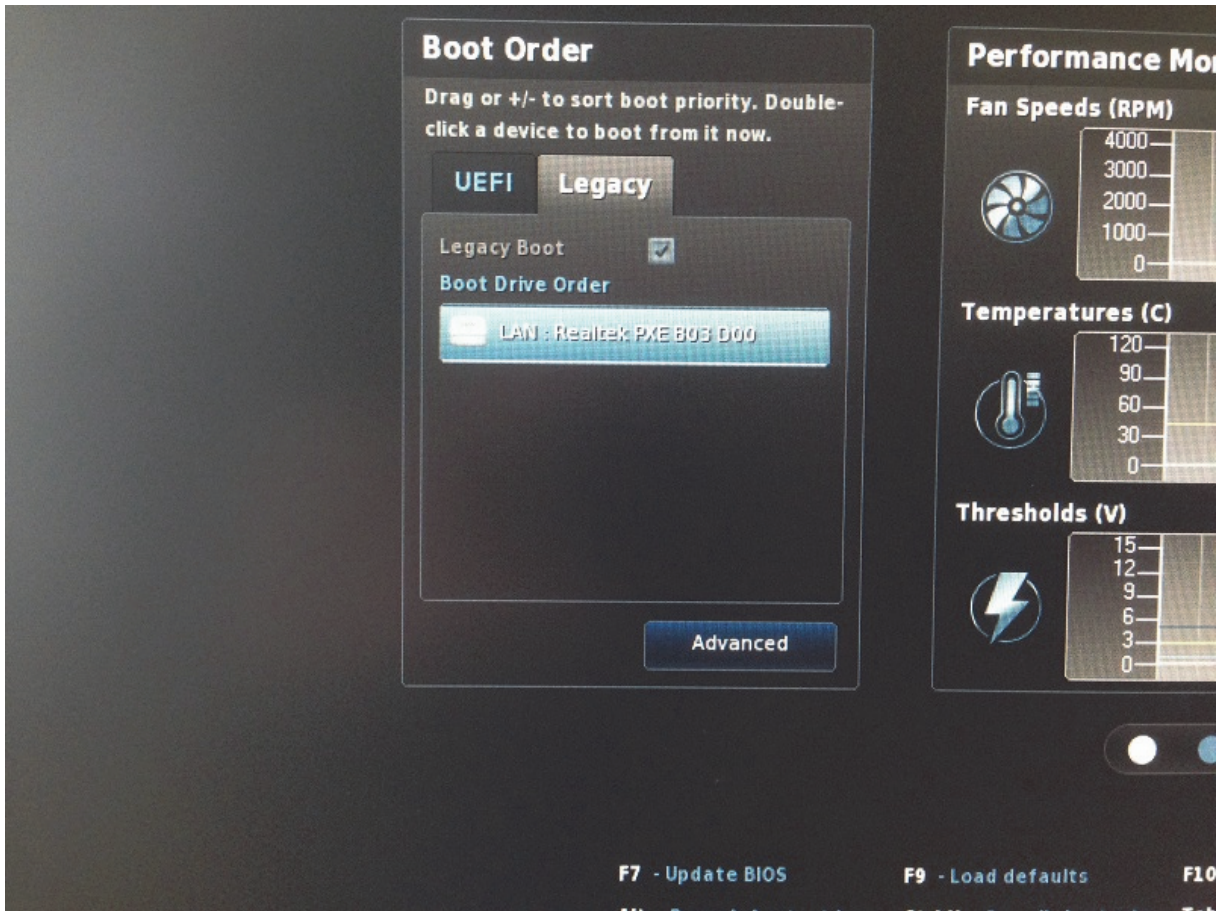
First install BIOS version later than 23.05.2014.

BIOS settings:

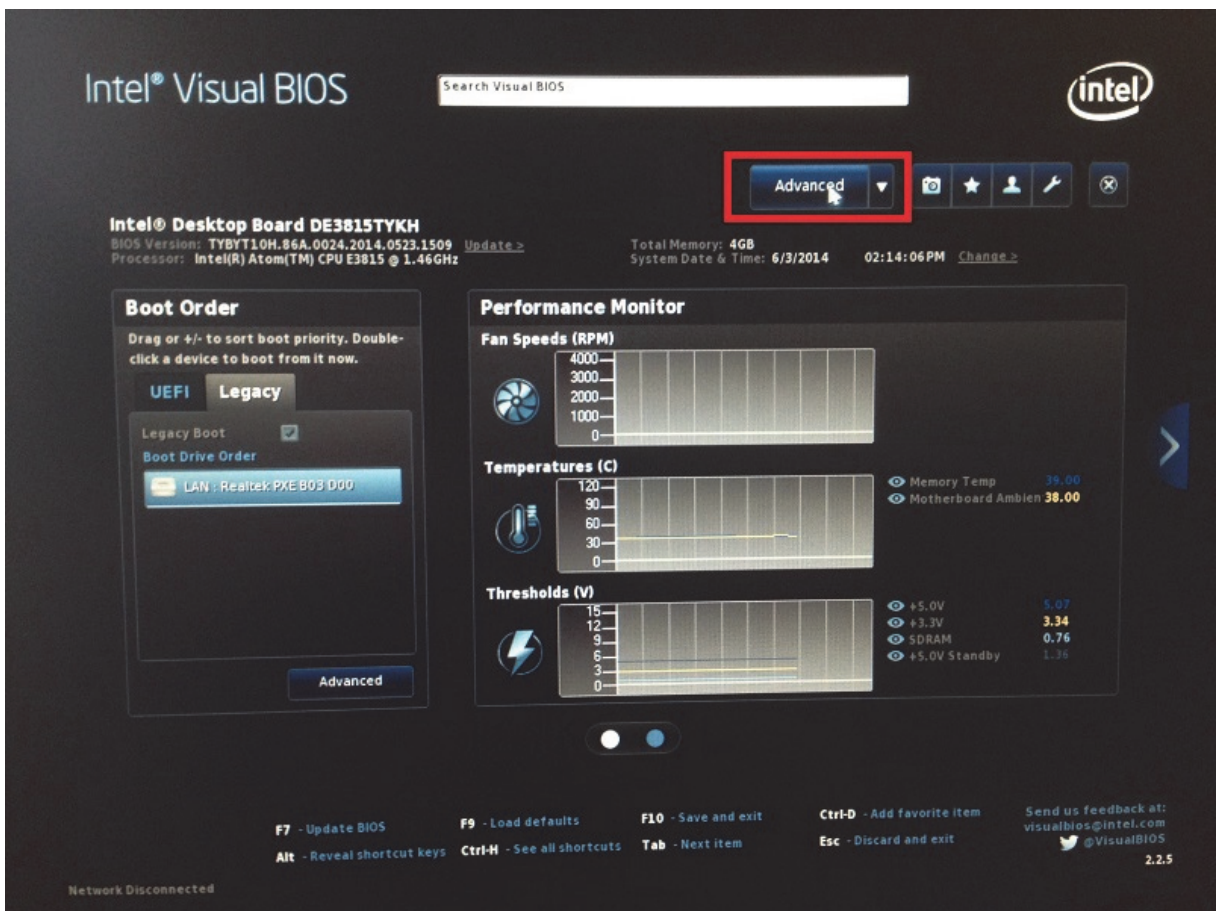
Enter BIOS by pressing „F2“ button at boot up time.
Remove check on „UEFI Boot“.

The screenshot displays the Intel Visual BIOS interface for the Intel Desktop Board DE3815TYKH. The interface is dark-themed and includes the following elements:

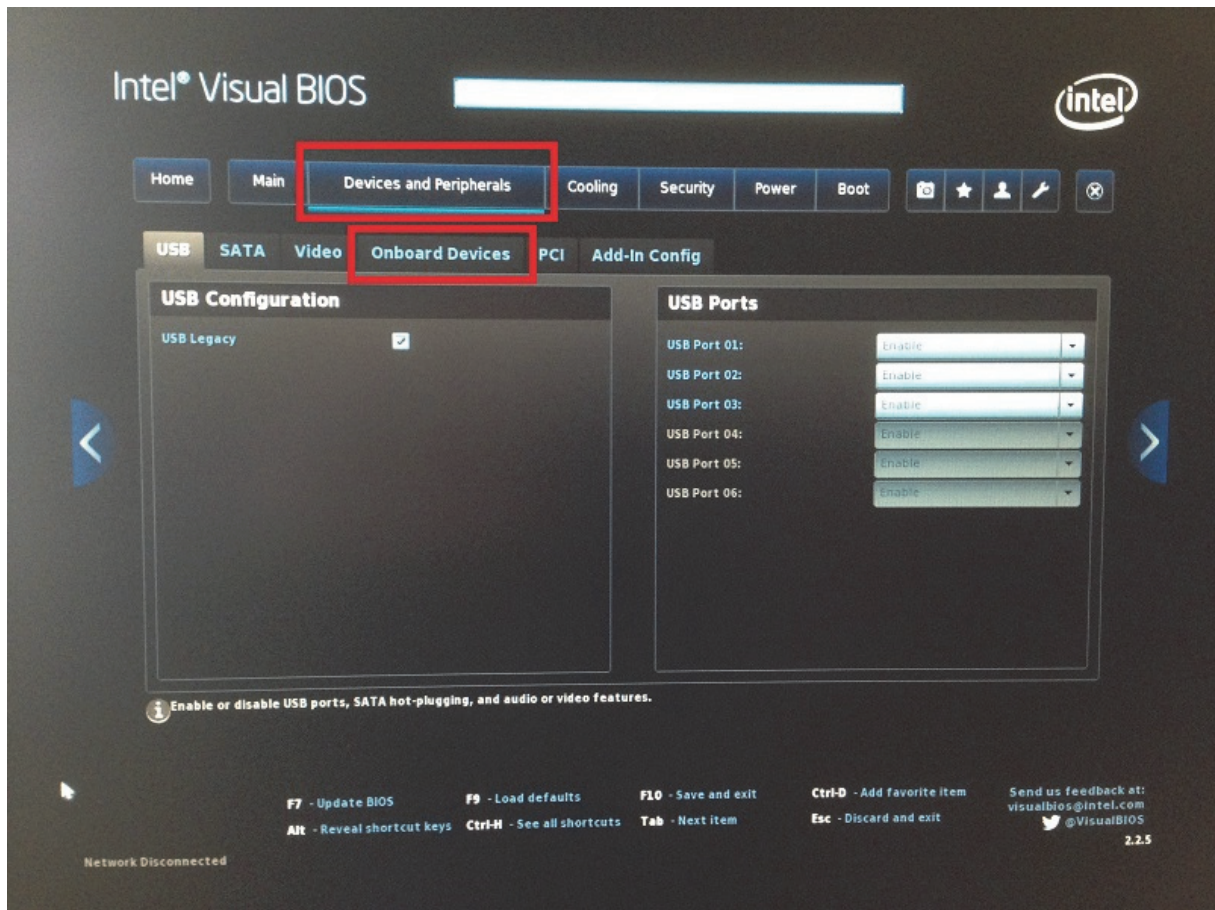
- Header:** Intel Visual BIOS logo, a search bar, and the Intel logo.
- System Information:** Intel® Desktop Board DE3815TYKH, BIOS Version: TYBYT10H.86A.0024.2014.0523.1509, Processor: Intel(R) Atom(TM) CPU E3815 @ 1.46GHz, Total Memory: 4GB, System Date & Time: 6/2/2014 06:36:23PM.
- Boot Order:** A section with tabs for UEFI and Legacy. Under UEFI, the 'UEFI Boot' checkbox is checked and highlighted with a red box. Below it, the 'Boot Drive Order' is listed as 'no boot drive'. An 'Advanced' button is at the bottom.
- Performance Monitor:** Three graphs showing Fan Speeds (RPM), Temperatures (C), and Thresholds (V) over time. The Temperature graph shows Memory Temp at 43.00 and Motherboard Ambient at 42.00. The Thresholds graph shows values for +5.0V (5.04), +3.3V (3.34), SDRAM (0.76), and +5.0V Standby (1.36).
- Footer:** A row of function key shortcuts: F7 - Update BIOS, F9 - Load defaults, F10 - Save and exit, Ctrl-D - Add favorite item, Alt - Reveal shortcut keys, Ctrl-H - See all shortcuts, Tab - Next item, Esc - Discard and exit. It also includes contact information for visualbios@intel.com and @VisualBIOS, and the version number 2.2.5.



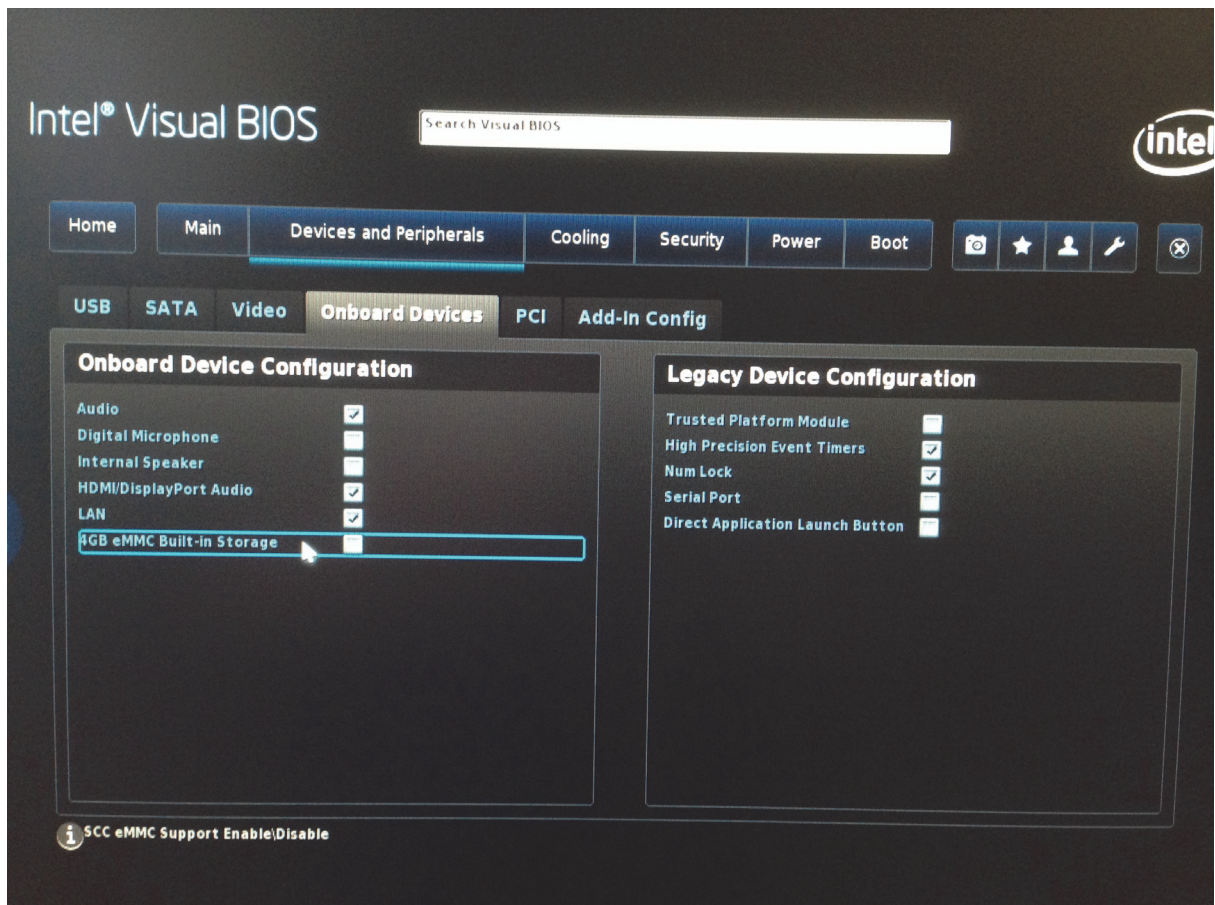
Choose „Advanced“.

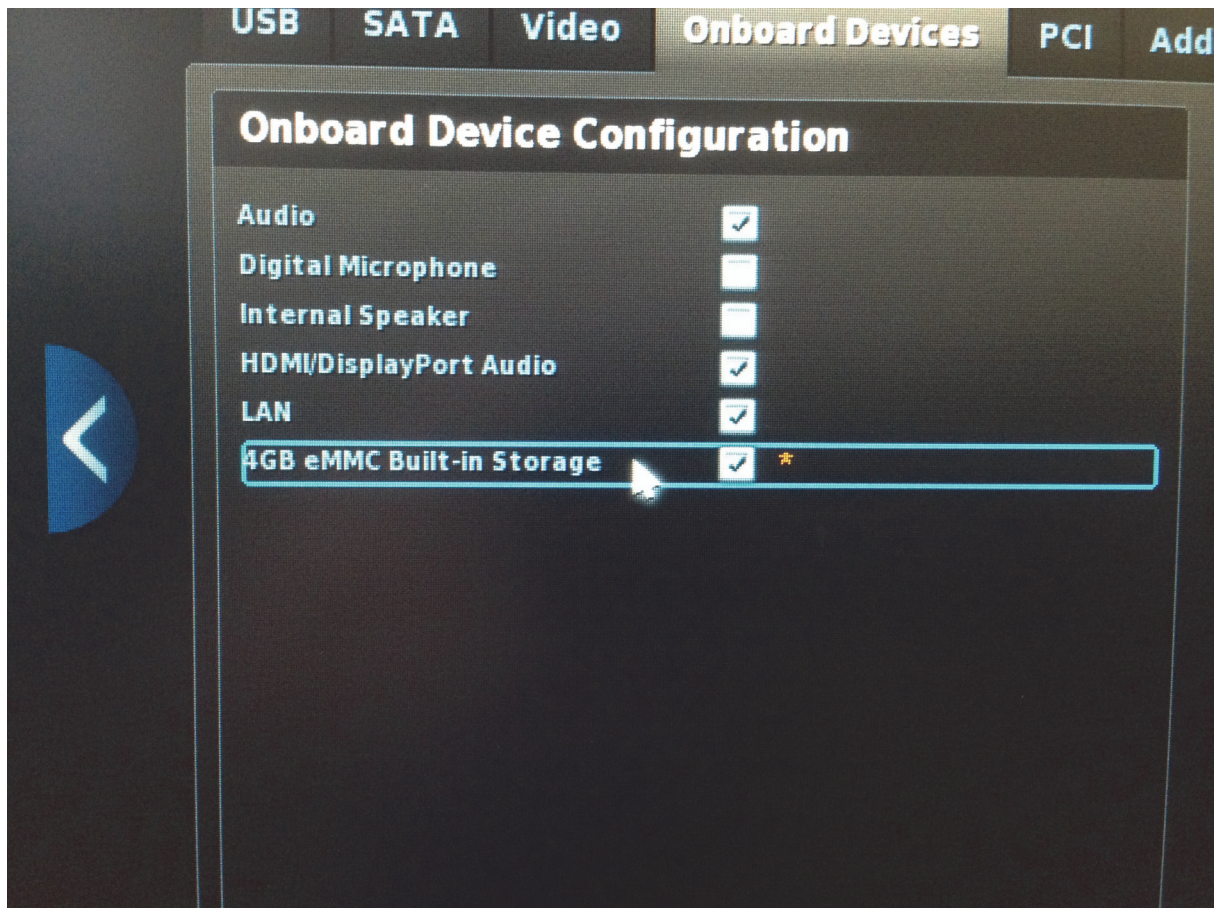


Choose „Devices and Peripherals“ and „Onboard Devices“

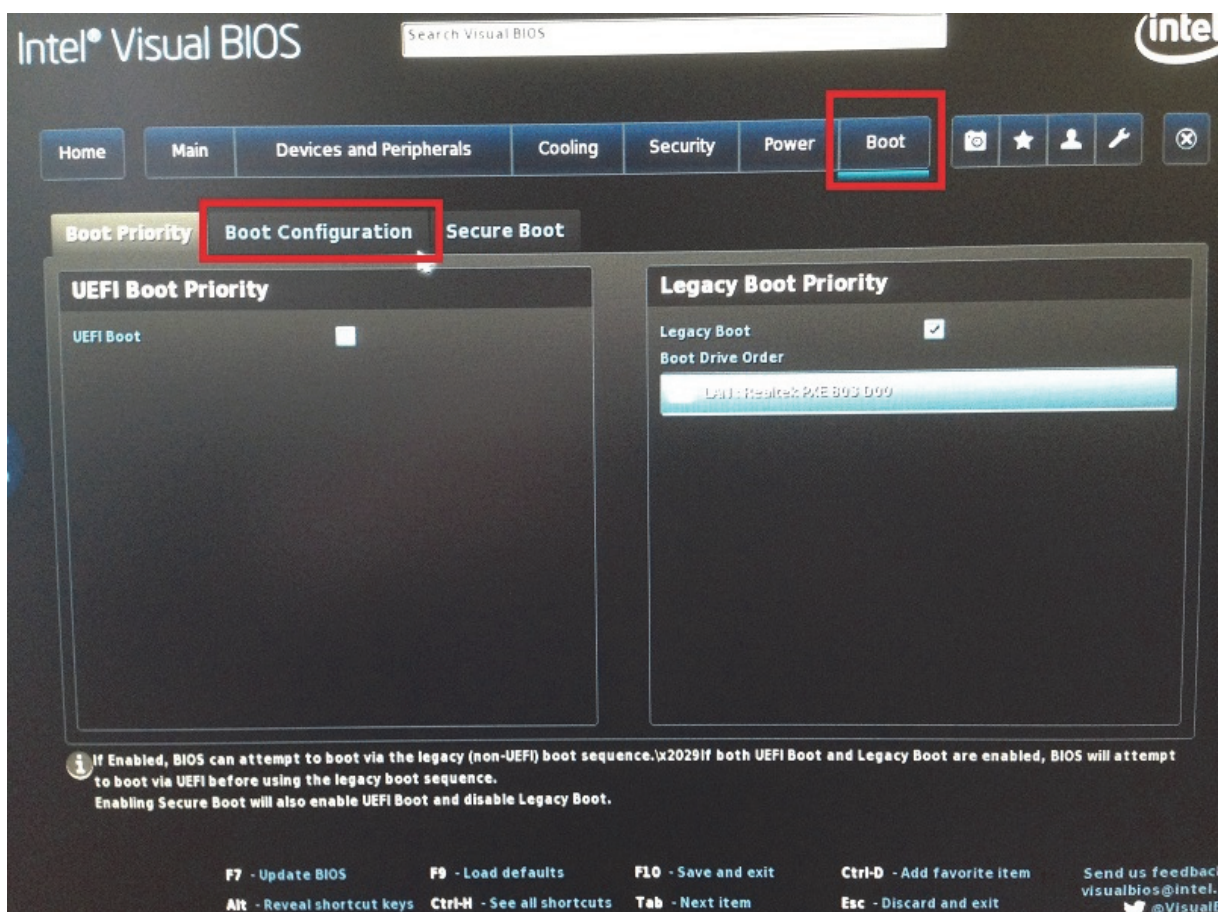


Enable the eMMC storage here.





Now choose „Boot“ and „Boot Configuration“

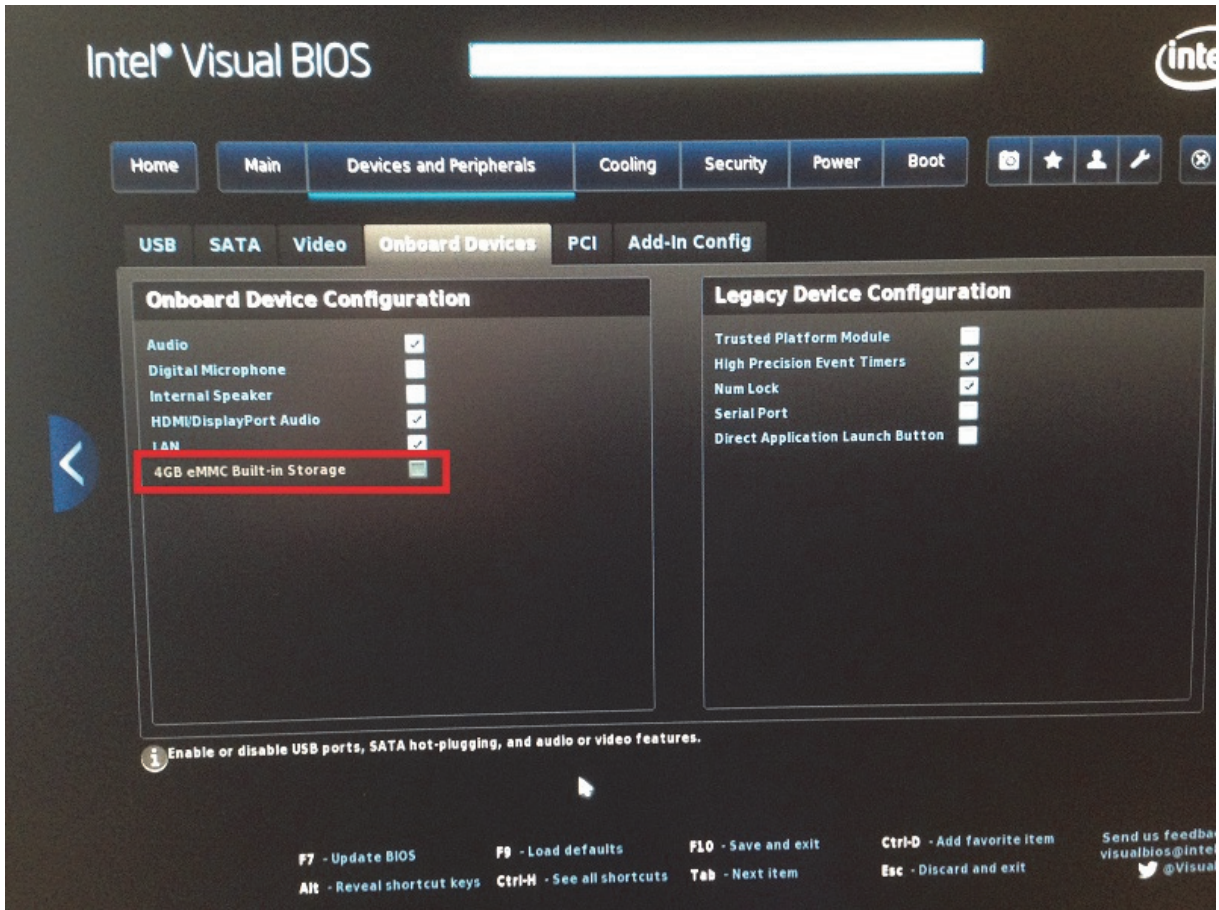


Choose your operating system („OS Selection“)

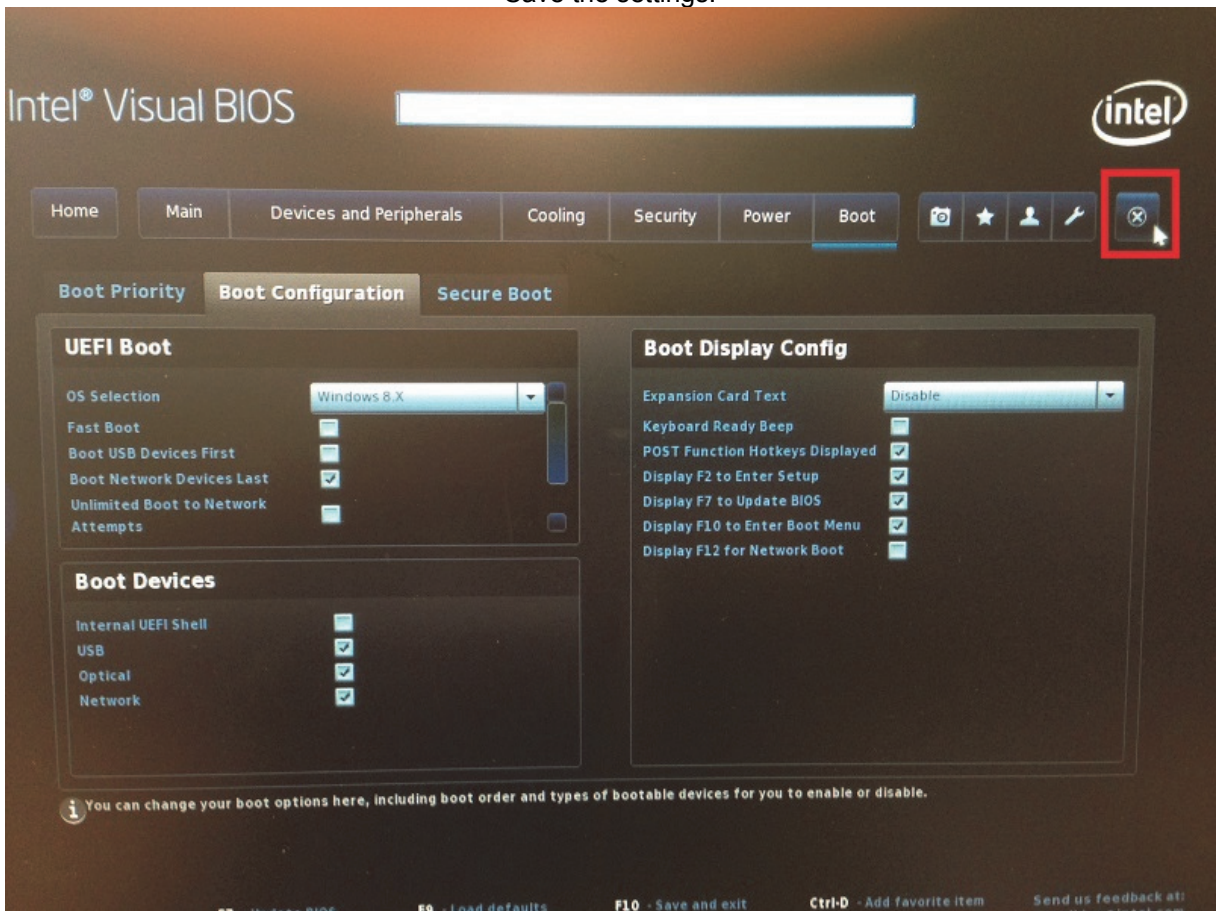
The screenshot shows the Intel Visual BIOS interface. At the top, there is a search bar and the Intel logo. Below that is a navigation menu with tabs for Home, Main, Devices and Peripherals, Cooling, Security, Power, and Boot. The Boot tab is selected. Underneath, there are sub-tabs for Boot Priority, Boot Configuration, and Secure Boot. The Boot Configuration sub-tab is active, showing two main panels: UEFI Boot and Boot Display Config. In the UEFI Boot panel, the OS Selection dropdown menu is open, showing options: Windows 8 X, Windows 8 X, Windows 8 Embedded, Windows 7, and Linux. The Boot Devices panel shows checkboxes for Internal UEFI Shell (unchecked), USB (checked), Optical (checked), and Network (checked). The Boot Display Config panel has a dropdown for Expansion Card Text set to 'Disable' and several other options with checkboxes. At the bottom, there is a footer with keyboard shortcuts (F7, F9, F10, Ctrl-D, Alt, Ctrl-H, Tab, Esc) and contact information for Intel Visual BIOS. The version number 2.2.5 is also visible.

This screenshot is similar to the one above, showing the Intel Visual BIOS interface. The OS Selection dropdown menu is open, and 'Windows 8 X' is now selected. The rest of the interface, including the navigation menu, sub-tabs, and other configuration options, remains the same as in the previous image.

ATTENTION!!! When using Win7 then eMMC will not be enabled.
Win7 does not support the eMMC storage.

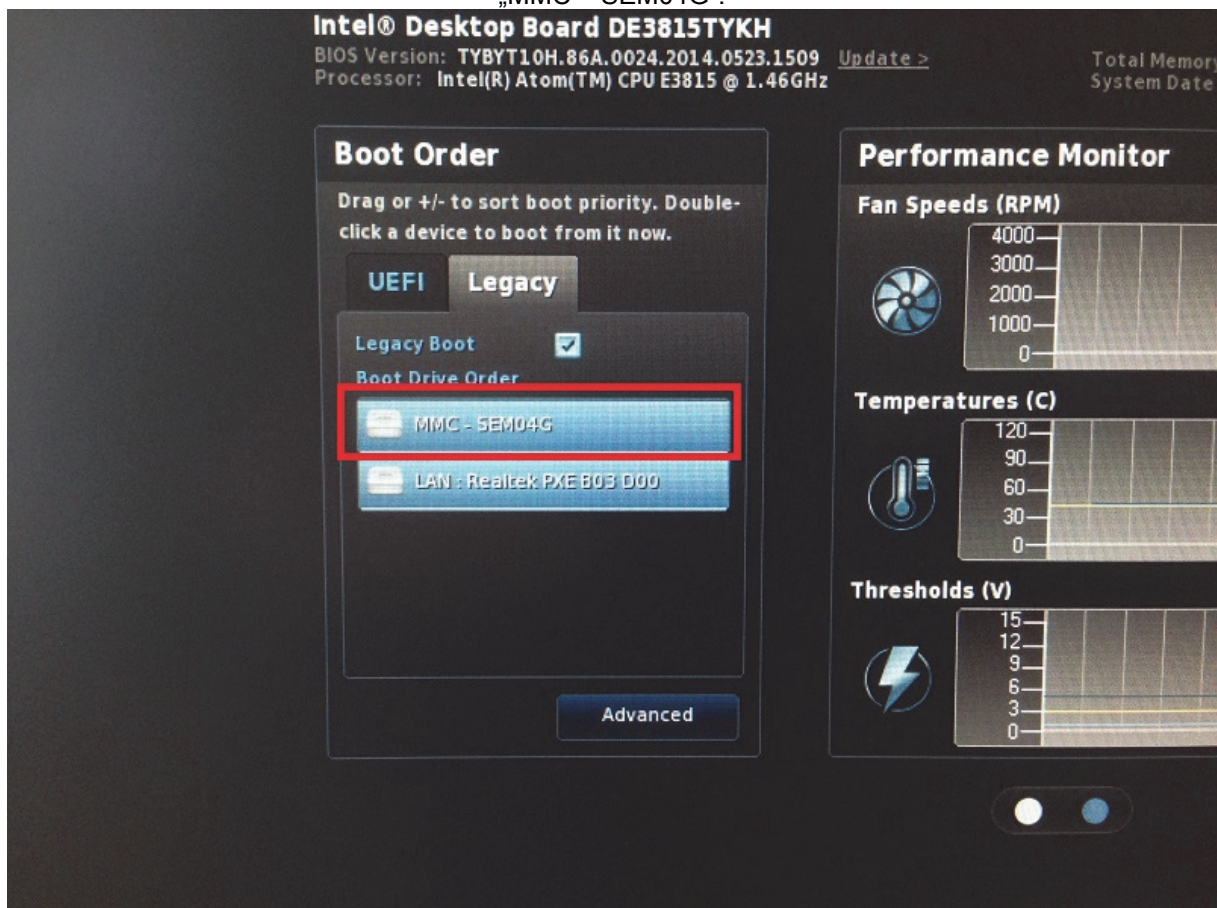


Save the settings.

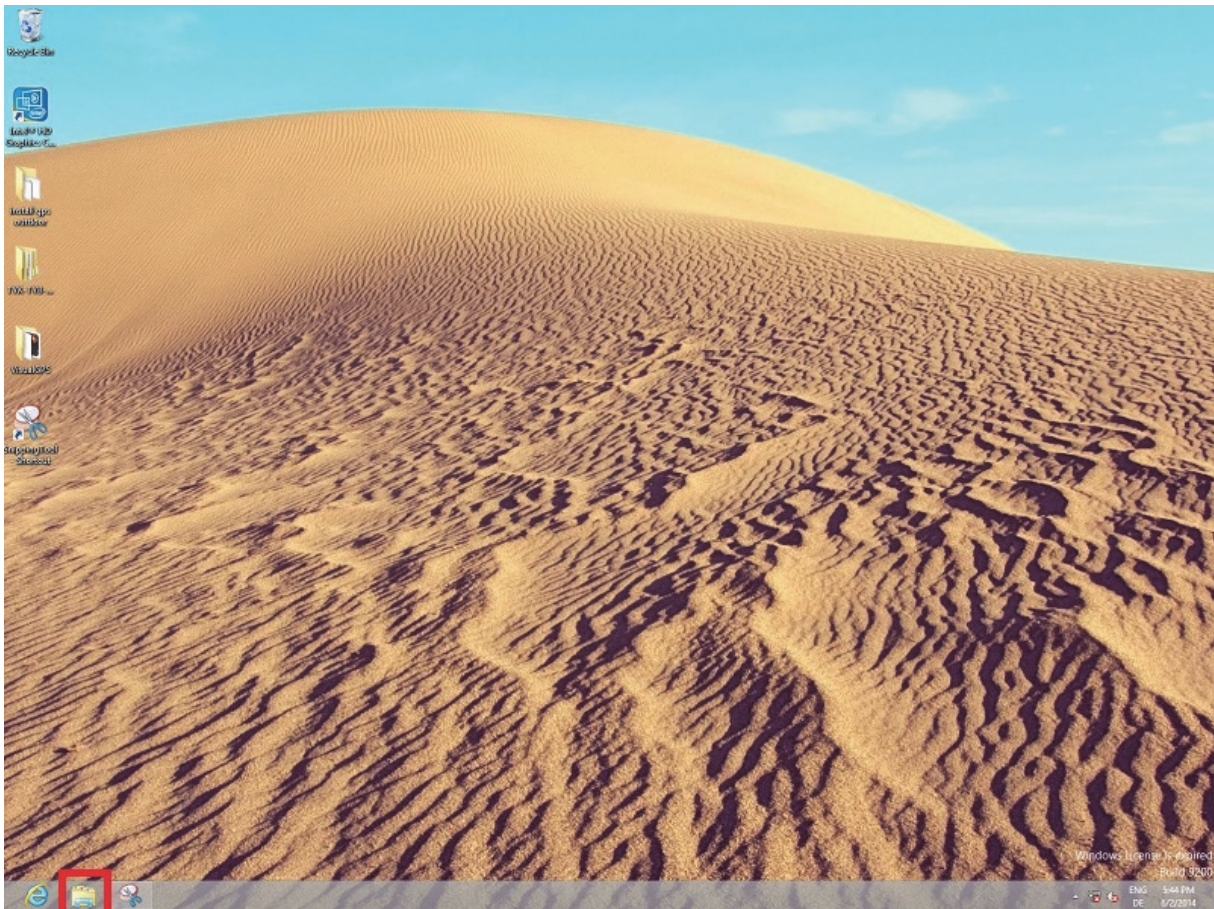




When re-entering BIOS after reboot the 4GB eMMC storage will appear as „MMC – SEM04G“.



Windows 8 storage view:



Choose „Computer“.

